



E-commerce — Solutions —

Expand Beyond Boundaries with Smart E-commerce



Overview

Your E-commerce platform by GridsonLAB is a complete B2B & B2C digital business solution designed to streamline the entire process from Order to Delivery.

It acts as a powerful digital showcase, allowing you to present your entire product range, varieties, specifications, and pricing to your customers in a structured and professional manner. Even if required, the platform can be used purely as a product display system, helping customers explore your offerings easily.

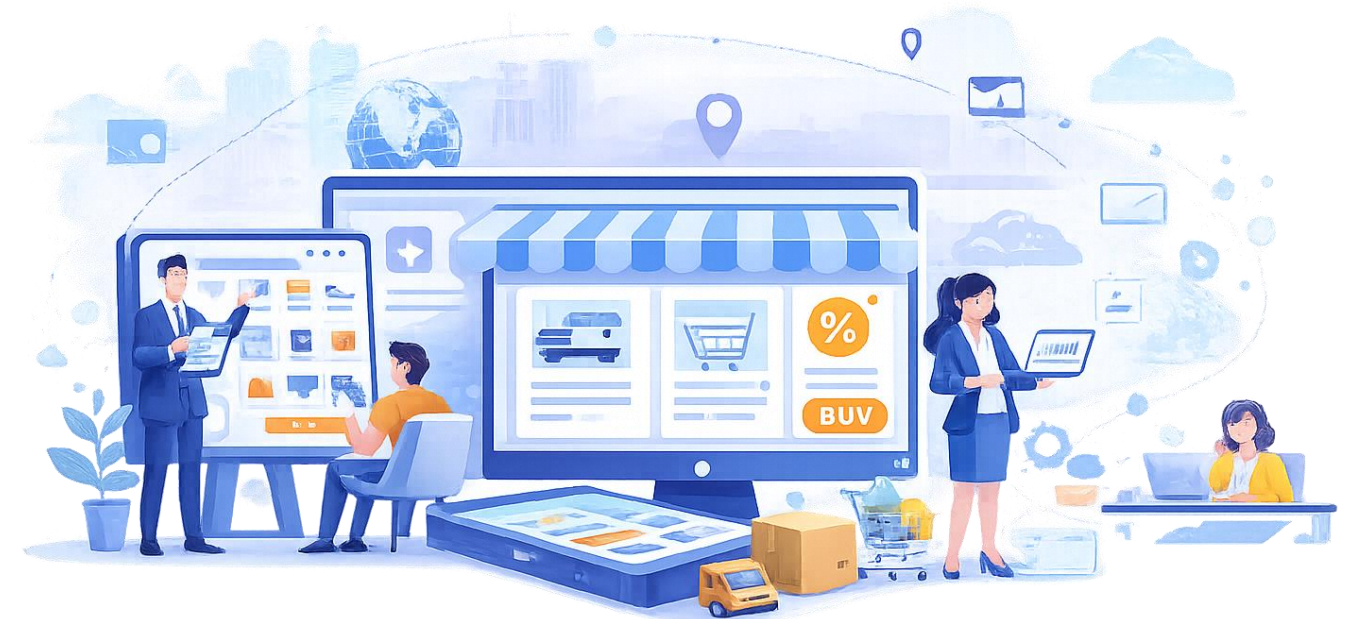
The solution enables manufacturers, distributors, dealers, and retailers to operate on a single connected platform, while continuing their existing billing systems.

Additionally, your sales team gets a smart mobile tool where they can:

- Show products to customers
- Check available stock in real-time
- View pricing instantly
- Directly place orders or make invoices through the app

With integrated features like WhatsApp API, CRM, dispatch tracking, and mobile applications, businesses can deliver a seamless and modern buying experience. This platform empowers businesses to sell anytime, anywhere, improve operational efficiency, and enhance customer engagement—making it a future-ready solution for modern trade.

E-commerce & Digital Business Solutions



Business Benefits

◆ 1. Powerful Digital Product Showcase

Display your **complete product range with varieties, images, and details** in one place. Customers can easily explore and select products without physical visits.

◆ 2. Salesman Empowerment (Very Important)

Your sales team gets a **smart selling tool**:

- Show products professionally
- Check **live stock availability**
- View **latest pricing**
- **Place orders instantly from customer location**

This reduces dependency on office coordination and speeds up order booking.

◆ 3. Reduce Operational Costs

Eliminate dependency on manual processes, reduce sales effort costs, and minimize infrastructure expenses.

◆ 4. Sell 24/7 Without Limitations

Your business stays active round the clock, allowing customers to place orders anytime.

◆ 5. Expand Market Reach

Enter a **borderless digital marketplace** and reach new customers beyond geographical limits.

◆ 6. Faster Order Processing

Automate the entire flow from order to dispatch, reducing delays and human errors.

◆ 7. Improved Customer Experience

Real-time updates, order tracking, and automated communication enhance trust and satisfaction.

◆ 8. Data-Driven Growth

Use reports and analytics to understand customer behavior and improve business decisions.

Commercial

Prerequisites: 1 Domain

Compatibility: Ultimate Pro, Enterprise and Corporate

	First Year INR	Next Year Renewal INR
E-commerce + Web Interface	25000	12000
Android Mobile App Interface (Optional)	45000	8000
IOS Mobile App Interface (Optional)	55000	12000
Extra Branch License (Optional)	25000	Lifetime

Terms & Conditions

- Prices mentioned above are exclusive of all taxes. Applicable taxes will be charged extra.
- Plugin pricing may differ based on the software variant, as higher variants consume more cloud bandwidth and user I/O resources.
- Renewal charges for plugins, wherever applicable, are subject to change in future depending on cloud infrastructure and maintenance cost.
- All disputes shall be subject to Indore jurisdiction only.
- In case the customer is using more than one software link, plugin purchase will be required separately for each link.
- Plugins will remain active for all companies created under the same software link.

Q & A

1. Do I need to change my existing accounting software?

No. The platform integrates with your existing accounting system through APIs, so you can continue your current billing process without disruption.

2. Can my customers track their orders?

Yes. Customers can track their orders in real-time, including order status, dispatch details, and delivery updates.

3. Does the system support WhatsApp notifications?

Yes. The platform supports WhatsApp Business API integration, allowing automatic notifications for order updates, dispatch, delivery, and more.

4. Is this platform suitable for B2B business?

Absolutely. The system is specially designed for B2B flow—connecting manufacturers, distributors, dealers, and retailers on a single platform.

5. Can I manage multiple price lists for different customers?

Yes. You can create **customer-wise pricing**, special rates, offers, and schemes based on your business needs.

6. Is mobile access available?

Yes. Android and iOS mobile apps are available, allowing both customers and businesses to operate from anywhere.

7. Can I handle multiple branches or locations?

Yes. The system supports **multi-branch operations**, enabling centralized control with distributed execution.

THANKS!

Any questions?

You can find me at:

Email: support@gridsonlab.com

Tel: 8349995484, 98983422136

Website: www.gridsonlab.com



GRIDSONLAB PRIVATE LIMITED

26 Jasmine Park, Treasure town road, Indore (M.P.) -
452012